

Welcome!

- Instructor Introductions (name, pronouns, position)
- Production Office Overview
 - Equipment/troubleshooting questions:
 - camsprodn@carleton.edu (M-F)
 - 507-222-5434
 - Hours of operation
 - Monday - Thursday: 10am - 5pm
 - Friday - Sunday: 12pm - 4pm
- Resources
 - CAMS Production Office Website
 - [Manuals/Quickstart Guides](#)



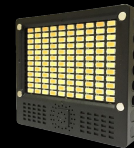
Agenda

- Available Lighting
- Safety & Handling
- Setting up Stands
- Arri Fresnels
- Light Modification
- Chimera Softbox
- Cineroid LED light
- Checking Out Gear
- Breakdown



Available Lighting

Arri Fresnels	Chimera Softbox Kit	Cineroid LED Field Light
<ul style="list-style-type: none">- Can get VERY hot- Tungsten bulb- Fresnel lens over the bulb <i>focuses</i> the light	<ul style="list-style-type: none">- Total light paired with a softbox which <i>modifies</i> and <i>diffuses</i> the light.- Can get VERY hot	<ul style="list-style-type: none">- LED light with adjustable brightness and color temperature.- Battery powered



Safety & Handling

- Heat awareness: some lights get *extremely* hot. Use gloves for these.
- Announce when you're turning on a light in a clear loud voice: "Striking!"
- Power lights off before moving. Let them cool down before packing.
- Run power cords along the floor and tape off when possible. Keep cables neat and free of tripping hazards.
- Don't wrap hot cables.



Setting up Stands

- Extend base to its widest position.
- Use sandbags to add extra support for heavy set-ups.
- Make sure cables run neat down the stand.



Arri Fresnels

Warning: These get VERY hot.

Tungsten - ~3200k color temperature (how warm/cool a light appears), creates a “warmer” look.

Fresnel lens - rings on the lens creates a more “focused” light. Can move from **spot** (focused beam) to **flood** (wider beam).

Barn doors “shape” the light.

Available in **150W** and **300W**.



Light Modification and Control

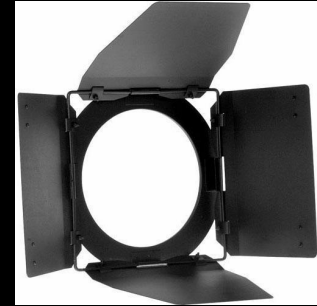
Barn doors

Disc reflectors/"bounce"

Diffusion

Flags

Gels

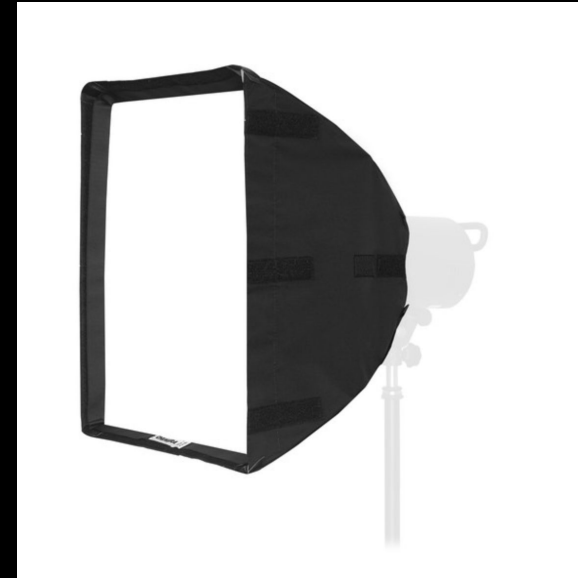


Chimera Softbox

A Tota light with a modifier attached to it.

Softbox = softens and diffuses the light to reduce harsh shadows.

Make sure to keep distance between hot lens and fabric.



Cineroid LED Light

- Light-emitting diodes are cool to the touch.
- Small, portable and battery-powered.
- Variable color temperature and brightness.
- Good for small set-ups.



Checking Out Gear

Must place a reservation. No same-day checkouts.

Check-outs are for 2 days.

You can renew for 1 more day by emailing camsprodn@carleton.edu or calling 507-222-5434 *before* your gear is due.

Late fees if turning in more than 2 hours late.

3 ways to reserve equipment:

1. Online via Webcheckout, our self-service booking system.
2. Call 507-222-5434 when we're open.
3. Stop by the office when we're open.