

CINEMATECH

Canon C100 mk II

Fill out the attendance
form



Welcome!

- Instructor Introductions (name, pronouns, position)
- Production Office Overview
 - Equipment/troubleshooting questions:
 - camsprodn@carleton.edu (M-F)
 - 507-222-5434
 - Hours of operation
 - Monday - Thursday: 10am - 5pm
 - Friday - Sunday: 12pm - 4pm
- Resources
 - CAMS Production Office Website
 - [Manuals/Quickstart Guides](#)



Agenda

- Kit Contents
- Webcheckout
- Build
- Settings
- Breakout
- Breakdown



Webcheckout

Resource type name:
Canon C100 Mark II Kits


Checkout time:
2 days

Renewals allowed?
Yes, for 1 additional day if
requested before
reservation expires

Catalog

🔍 Catalog ★

📖 / CAMERA / Camera Kits / ☆ Canon C100 Mark II Kits



0 in cart +

DO NOT REMOVE THE CAMERA HANDLE

Camera comes supplied with:
[1] Canon 18-135mm f/3.5-5.6 lens
[2] batteries
[1] Canon battery charger
[1] rubber viewfinder hood
[1] lens cleaning kit
all in a Tenba camera bag with shoulder strap

Authorization is required to add items of this type.
✔ Authorization granted

☰ Timeline

Items

▼ <input type="text"/>	Canon C100mkII Kit 08
	Canon C100mkII Kit 01
	Canon C100mkII Kit 02
	Canon C100mkII Kit 04
	Canon C100mkII Kit 06
	Canon C100mkII Kit 07
	Canon C100mkII Kit 09
	Canon C100mkII Kit 10
	Canon C100mkII Kit 13

Kit Contents

2 Batteries



Charger



Camera body WITH
18-135mm lens



White balance card



Camera bag



Camera Parts



Removable Lens

- Always use body cap, lens cap, and rear lens cap to protect gear
- Push release button to release lens, then turn lens counterclockwise



Zoom vs. Prime Lens

Prime	Zoom
<ul style="list-style-type: none">● Fixed focal length e.g. 50mm, 24mm● Superior image quality, until recently● Cheaper● Usually wider APERTURE= more light = more BLUR	<ul style="list-style-type: none">● Continuous range of focal lengths e.g. 11-24mm, 18-135mm● More versatile● Better for documentary/observational when you're "running around"

Aperture = the opening in a lens through which light passes to enter the camera.

Zoom vs. Prime Lens



From Kensei Akatsu's YouTube video, [ZOOM VS. PRIME | Which One's Better For You?](#)

K1

Lens Rings

Lens
hood



Focus



Aperture



Mounting the Camera



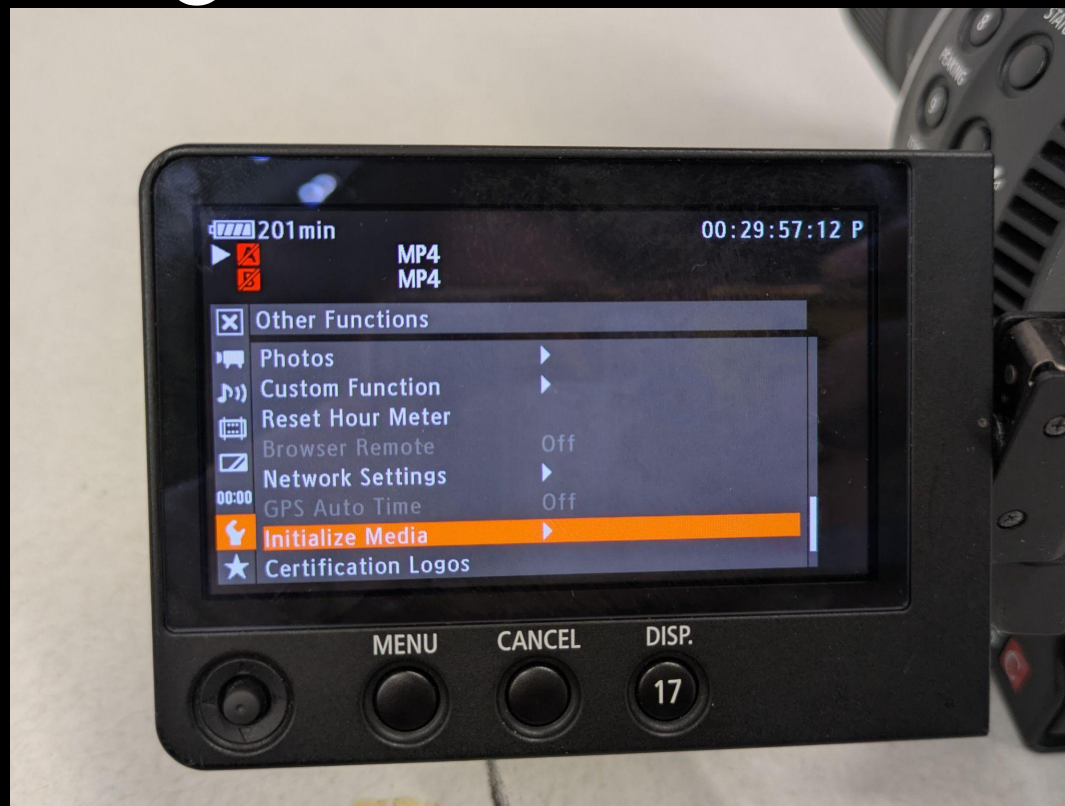
Insert Battery



Inserting SD Card



Formatting SD Card



Recommended Settings

Movie Format: MP4

Bit Rate/Resolution: 24 Mbps 1920x1080

Frame Rate: 23.98

Shutter speed: 1/48

Base ISO: 850

Main Record Format: MP4

System Frequency = 59.94

Time Code

- Sequential numeric code representing specific points in time within video and audio recordings, enabling precise synchronization and editing.
- Can making SYNCING SOUND easier.

ISO/Gain

- Electronically amplifying a signal to make an image brighter
- Also amplifies “noise” aka “graininess” in an image
- “Native” ISO is 850 for the Canon C100



Shutter speed

- The amount of time the camera's shutter stays open, controlling how long light hits the sensor to create an image
- Always double the framerate
- Ex. 24fps = 1/48



ND Filters

- Neutral density filter = reduces the amount of light entering a camera or optical system, preventing overexposure
- Sunglasses for your camera
- C100 has 3 ND filter settings



White Balance

- Calibrates the color in your filming
- Measured in Kelvin e.g. 4900K



Monitoring Tools

Peaking: Outlines whatever is in focus

Zebra Stripes: Marks any areas of overexposure in the frame

Magnification: temporarily enlarges the live view image to allow the photographer to precisely check and adjust manual focus before recording

Monitoring Tools

HISTOGRAM: a graph that graphically displays the tonal or brightness values of the video image

WAVEFORM: a video scope that provides a precise, technical display of an image's brightness (luminance) and color levels, rather than its visual appearance

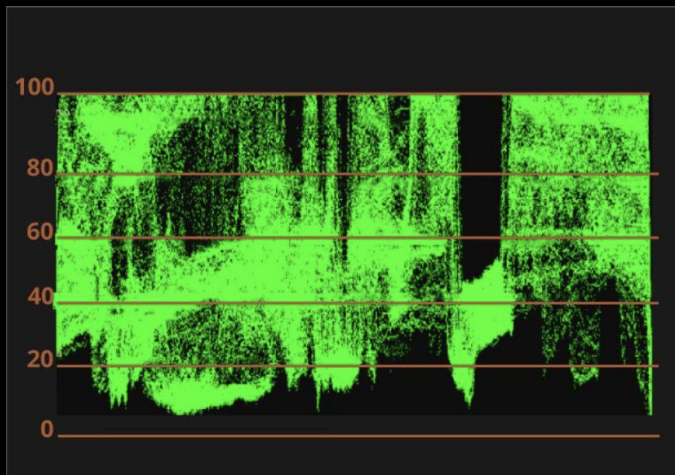


Monitoring Tools

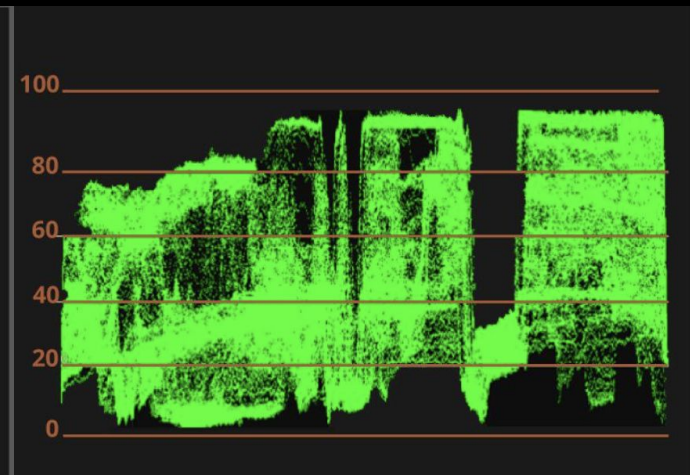
Highlights



Shadows



This waveform shows severe clipping



This waveform shows correct levels

Breakdown