



MOLECULAR PHARMACOLOGY AND THERAPEUTICS



WHAT IS PHARMACOLOGY?

Pharmacology is an area of science residing at the intersection of biology, biophysics, chemistry, genetics, immunology, neuroscience, and physiology. Contemporary research in pharmacology seeks to understand the biological basis of disease, elucidate the molecular and cellular mechanisms underlying

drug action, and identify new molecular targets for therapeutic development. These pursuits are critical for improving our ability to treat cancer, infectious disease, neurological disorders, and cardiovascular disease, and other medical problems.



The University of Minnesota Medical School is located on the Twin Cities campus.

WHO ARE WE?

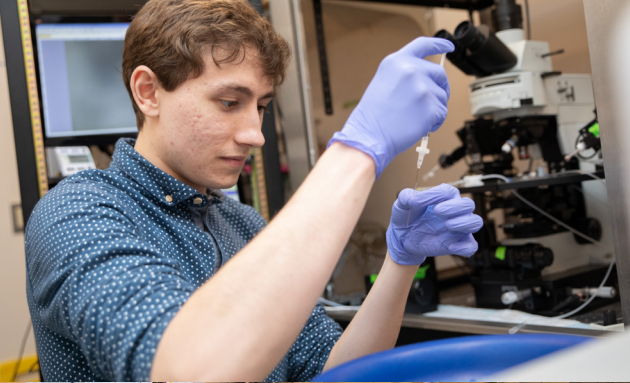
The **Molecular Pharmacology and Therapeutics (MPaT)** graduate program is a collaborative training community centered in the University of Minnesota Medical School. Our students come to this program from all around the world and typically have undergraduate degrees in biology, chemistry/biochemistry, neuroscience, pharmacology, physics/biophysics, or physiology. With a commitment to excellence and diversity, MPaT prepares students for success in various careers. Our alumni are scientists in academia and industry, pharmaceutical industry leaders, educators, physicians, medical science liaisons, regulatory specialists, scientific writers, and consultants.

Doctor of Philosophy (PhD) track

Our PhD track offers a research-intensive training experience that emphasizes critical thinking, state-of-the-art techniques, and communication. MPaT typically admits 8-12 PhD students per year who then conduct thesis research under the supervision of a graduate faculty advisor. MPaT is enriched by the contributions of more than **70 graduate faculty advisors** studying cancer, infectious and autoimmune disease, addiction and the opioid crisis, Alzheimer's disease, Parkinson's disease, diabetes, heart failure, pain, and many other medical problems. PhD students receive full tuition coverage, an annual stipend (\$34,000 for the 2021-2022 academic year), and subsidized health insurance. Relocation funds are provided to PhD students who are not employed by the University of Minnesota prior to matriculation. PhD students typically graduate in 5 years or less.

Master of Science (MS) track

Our MS track offers a comprehensive educational experience that can help make students more competitive as applicants to PhD programs, medical school, or positions in industry. MPaT typically admits 10-20 MS students per year, who then choose from multiple program tracks that vary in the intensity of the research experience. With significant flexibility in coursework and laboratory requirements, our MS students can tailor this 1-2 year training program to best suit their future interests and needs.



INNOVATIVE,
INTERDISCIPLINARY,
AND IMPACTFUL
TEAM-BASED
RESEARCH

70+

GRADUATE
FACULTY
ADVISORS



PROFESSIONAL
DEVELOPMENT
AND SOCIAL
OPPORTUNITIES



INTERNATIONAL
STUDENTS
WELCOME

COMMUNITY

Together with the **Department of Pharmacology**, MPaT is committed to building a **diverse and inclusive** community that attracts individuals with different backgrounds and experiences. With support from the Department of Pharmacology and connections to institutional partners including the **Masonic Cancer Center**, **Center for Immunology**, **Institute for Therapeutics Discovery and Development**, and **Medical Discovery Team on Addiction**, MPaT provides students the opportunity to contribute to innovative and interdisciplinary team-based research.

The Pharmacology Graduate Student Organization is a student-led group that organizes professional development and social opportunities for MPaT students including alumni career panels, service events, happy hours, and attendance at sporting events. By the time they graduate, our students have built a strong network of colleagues that will support them as they advance in their careers.

MINNEAPOLIS/ST. PAUL - THE "TWIN CITIES"

MPaT is located on the beautiful Twin Cities campus of the University of Minnesota, on the east bank of the Mississippi River. **Minneapolis/St. Paul** boasts an extensive park system, bike paths and trails, lake shores, restaurants, sporting and concert venues, an active theatre scene, museums, and nightlife. The four seasons provide opportunities to enjoy Minnesota in myriad ways, including team sports, camping, hiking, birding, running, sailing, fishing, skiing, and skating. Regardless of your interests, you can find many ways to connect with others in the natural beauty of Minnesota.

APPLICATION DETAILS AND INSTRUCTIONS

Apply Now!



MPaT does not require or solicit GRE scores from applicants
Application deadline: December 3, 2021

Contact information

Director of Graduate Studies: Colin Campbell, PhD campb034@umn.edu
MPaT Coordinator: Marie Lindloff lindl076@umn.edu



Follow us on Twitter: @MPaT_MPAT_PHCL_UMN



Follow us on Instagram: @umnpharmacology

[MED.UMN.EDU/PHARMACOLOGY](https://med.umn.edu/pharmacology)