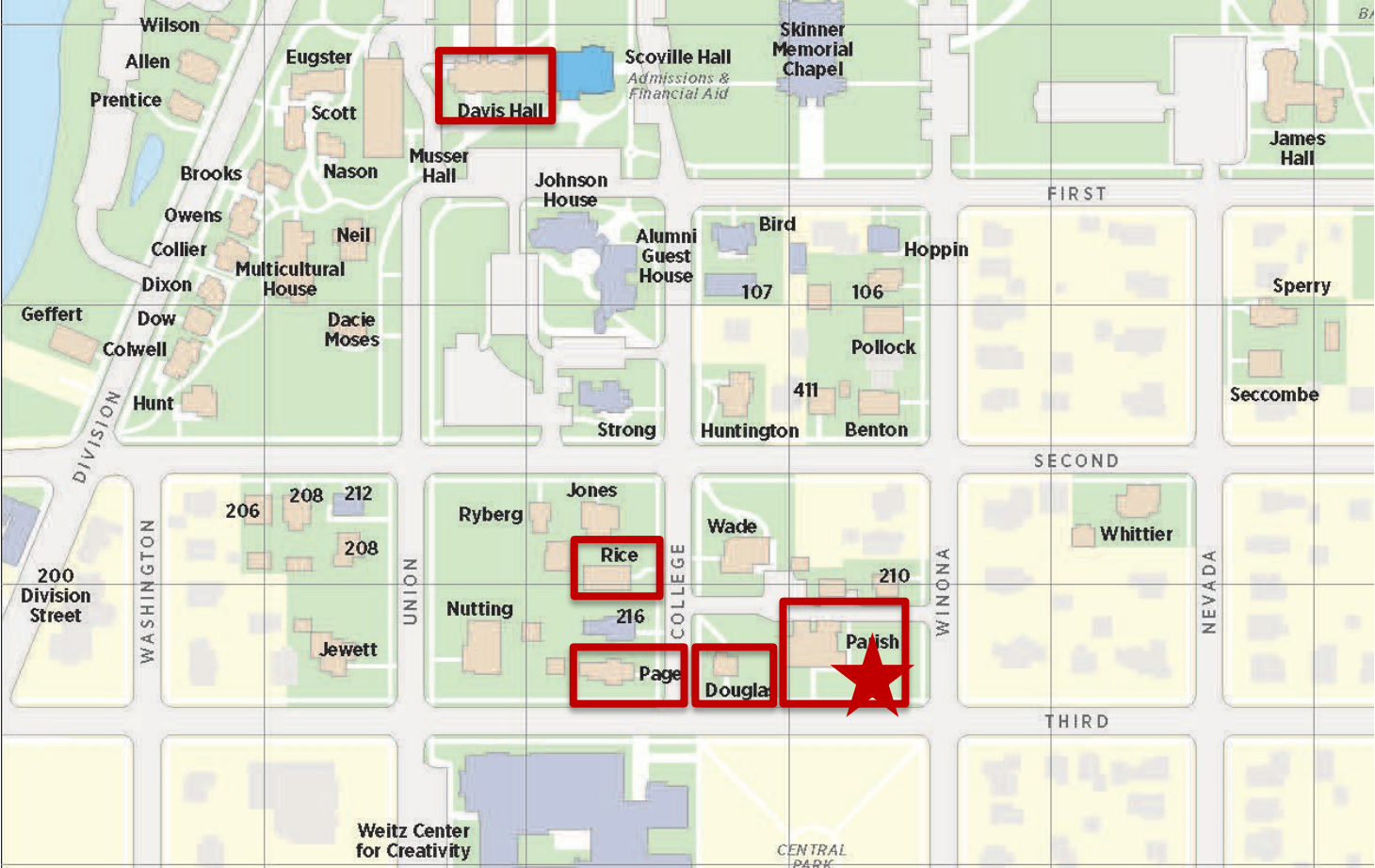


Carleton

Student Housing Phase Three

Remodel Davis Hall, Four Houses & Dig Geothermal Well



SECOND STREET

COLLEGE STREET

WINONA STREET

THIRD STREET

SIDEWALK CLOSED (PERIODICALLY)

PERIODIC PEDESTRIAN TRAVEL TO/FROM MAIN CAMPUS & WEITZ CENTER

Water Main Tie-In. Coordinate with City of Northfield.

PERIODIC PEDESTRIAN TRAVEL TO/FROM MAIN CAMPUS & 216 COLLEGE ST

RICE

PARISH GARAGE

PAGE

DOUGLAS

PARISH

SIDEWALK CLOSED AHEAD

SIDEWALK CLOSED

SIDEWALK CLOSED

SIDEWALK CLOSED

PERIODIC SIDEWALK CLOSURE AHEAD. USE OTHER SIDEWALK.

POTENTIAL DIRECTIONAL DRILLING/EXCAVATION SITES

TEMPORARY CONSTRUCTION FENCING. POUNDED POST AND SCREENING

Phase 3 Disturbance Avoidance Plan
7/7/2025 - 5/29/2026

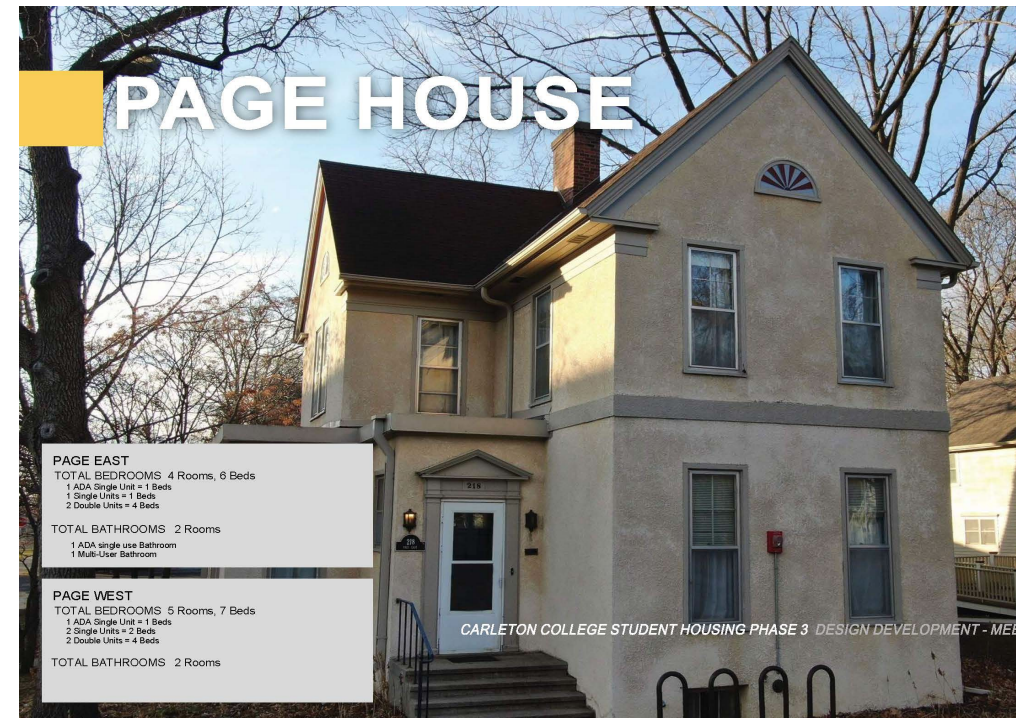
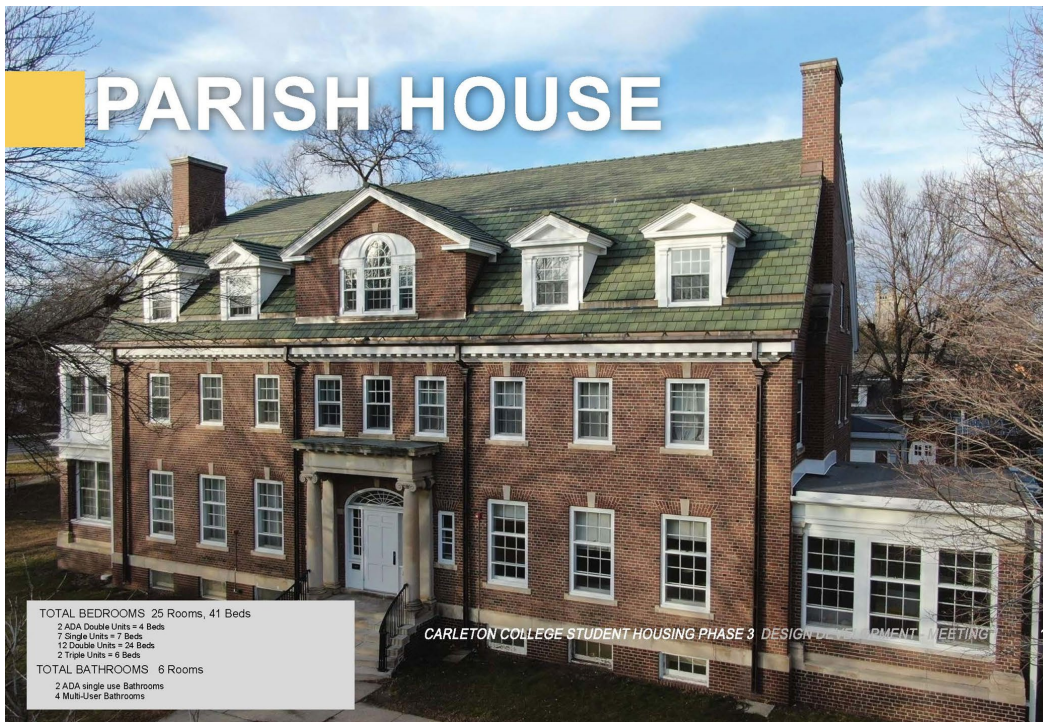


Student Housing Phase 3: Guiding Principles

- **Develop Community Space within houses, separated from private bedroom zones.**
- **Design to enhance diversity, equity, and inclusion within each housing facility.**
- **Improve access, especially on first level and common spaces.**
- **Maintain existing overall bed count as well as the layout of the current bedrooms.**
- **Improve energy efficiency.**
- **Replace mechanical and electrical systems, and low voltage systems.
HVAC systems will be designed to utilize the college's geothermal heating and chilled water systems.**
- **Meet the construction budget goal.**
- **House designs must allow for adaptability for future changes in use.**
- **Extend the useful life of the buildings for 30-50 years.**
- **Retain historic features and character of the houses.**

Carleton

Student Housing
Phase Three:
Remodel Four
Houses and
Lower Level
Davis Hall



Carleton

